



Sensors

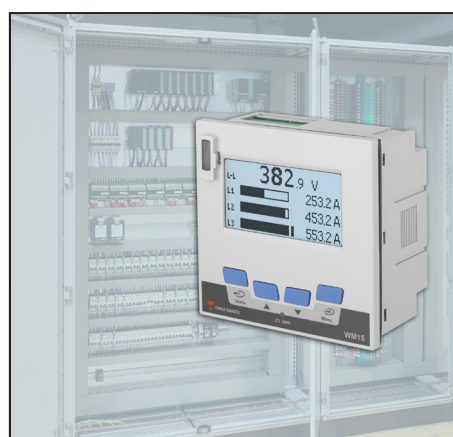


Switches



Controls

Application notes



Application Note : December 2019

Market involved : Energy efficiency

Product : WM15

Customer : System integrators, installers

Subject : Error free installation and fast commissioning

CUSTOMER ISSUE :

The installation of power analyzers can lead to wiring errors resulting in wrong measurements.

If the power analyzer doesn't provide any diagnostic tool, troubleshooting is not easy.

This may require a new intervention from the installer and additional costs, trips on site, etc.

OUR SOLUTION :

The WM15 offers a wiring check procedure at first switch on, so the installer can immediately understand if there is a wiring error.

In addition the proposed solution is graphically shown on the LCD display.

If the error is not immediately detected because the installer misses the indication on the display, the system integrator is able to detect the errors using the UCS software or the UCS Mobile App.

Without requiring a physical change of the connections, a remote command can be sent via UCS to link the inputs to the correct phase and/or current direction.

This software correction is always available on a dedicated info page, so as to record the installation details in case of future interventions.

BENEFITS :

- Wiring check procedure at power on with a graphical solution proposal
- Wiring check icon for troubleshooting
- Virtual correction via UCS software or UCS Mobile App
- Cost-saving solution for both installers and system integrators